

# IOWA STATE UNIVERSITY

## COVID-19 – Iowa State University Response 2020

**Chief Michael Newton, Ph.D.**

Associate Vice President for Public Safety

**Erin Baldwin, MHA, MPH, FACHE**

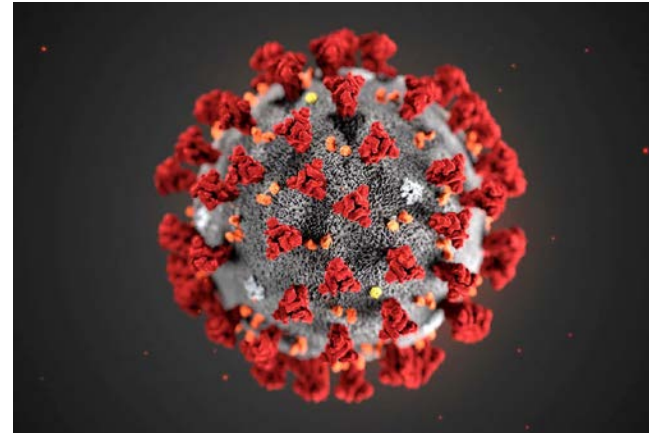
Assistant Vice President, Student Health & Wellness

**Frank Peters, Ph.D.**

Director of the Study Abroad Center

**Shaun Jamieson, M.Ed.**

Office of Risk Management - International Risk Analyst



# COVID-19 – Iowa State University Response 2020

Iowa State University has an ongoing commitment to emergency management response that prioritizes the health and safety of our students, faculty, and staff. Accordingly, Iowa State emergency management, public safety, and student health leaders have been actively tracking the Novel Coronavirus Outbreak (COVID-19) since early January, and basing all decisions on guidance from the Centers for Disease Control and Prevention (CDC), U.S. Department of State, and Iowa Department of Public Health (IDPH), in consultation with the Board of Regents



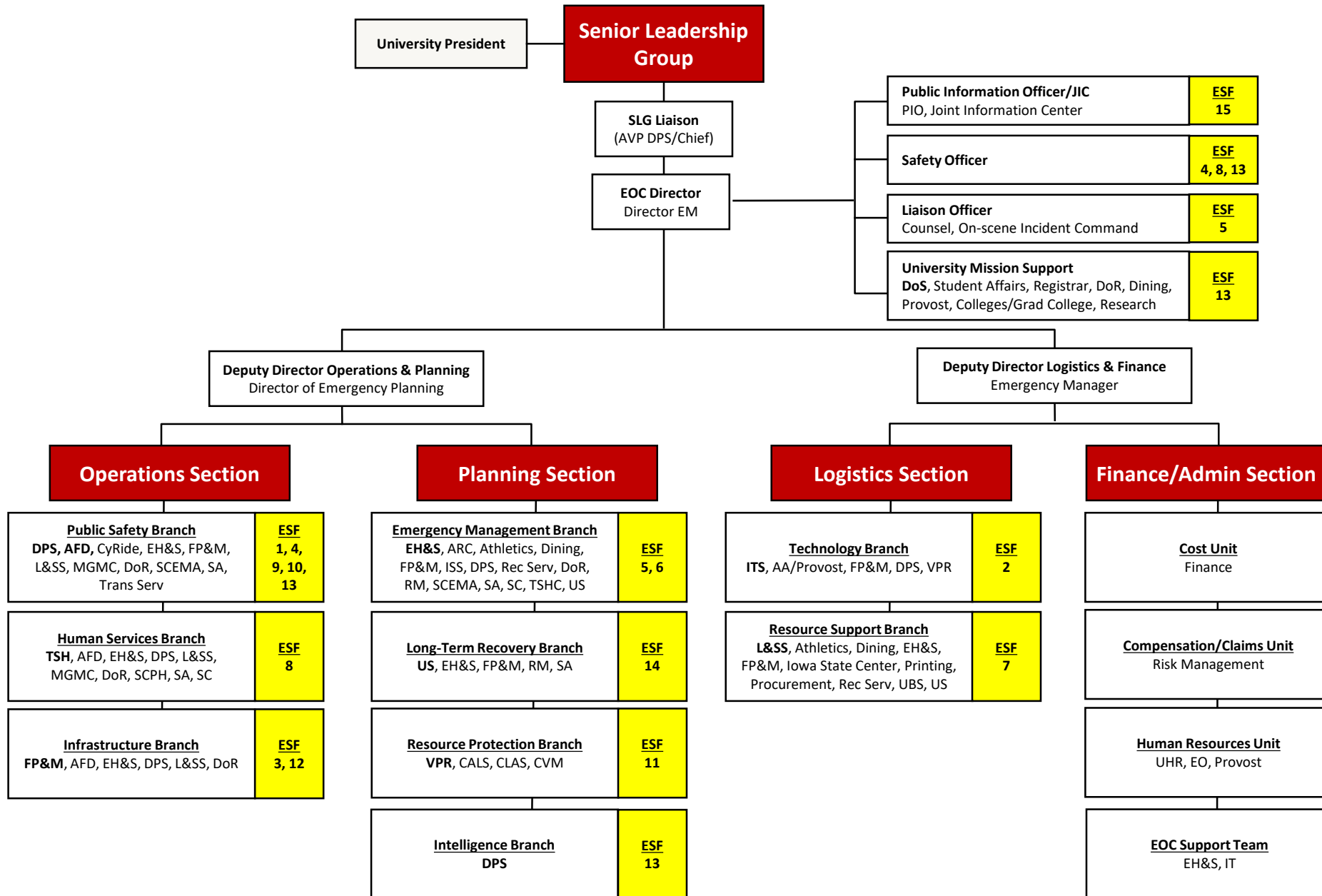
**Iowa State University**  
Comprehensive Emergency Operations Plan

December 2018

---

**Iowa State University**  
**Emergency Operations Plan**  
**Emergency Support Function Annex #8**  
**Public Health and Medical Services**

# Iowa State University Emergency Operations Center Organizational Chart



## January 27

- This proactive approach enabled senior leadership and other key university officials to quickly assemble in late January when the COVID-19 outbreak widened.
- The group met to identify Iowa State students, faculty, and staff in China (3 total) and discuss risks and potential impacts.
- In accordance with the CDC and State Department guidance, university leadership decided to prohibit travel to China and recall ISU students in the country.
- **At that time, a number of university working groups were activated** (evaluate specific decisions and action items):
  - ❑ Study Abroad Working Group,
  - ❑ Health Services Working Group,
  - ❑ Academic Continuity Working Group
  - ❑ Public Information Officer Working Group

## January 28

- The Iowa State community was notified of the China travel restriction through a [campus-wide email](#) from President Wintersteen. A [webpage](#) was established through the Thielen Student Health Center to provide timely outbreak updates and health and safety precautions. The university also engaged Mary Greeley Medical Center to begin collaboration and information sharing.

## February 26-28

- As the outbreak worsened and cases were being reported in the United States, senior leadership and key university officials convened in person again on February 26.
- Based on the CDC's level 3 travel warning, the university decided to restrict travel to South Korea.
- **University Leadership Activated the following teams:**
  - ❑ The university's Incident Management Team
  - ❑ Strategic Response Working Group
  - ❑ Emergency Operations Center Team
- A [campus-wide communication](#) was disseminated the morning of February 28 to announce the new travel restrictions and a [centralized safety website](#) and FAQ were created

## February 28-March 1

- By early evening on February 28, the CDC had raised the travel warning to level 3 for Italy.
- Chief Michael Newton immediately notified President Wintersteen and senior leadership.
- Conference calls were convened that evening and again the following day to finalize plans for expanding travel restrictions to Italy and recalling students and faculty from the country (135 total).
- **The following working group was activated:**
  - ❑ Housing Working Group
    - Activated to facilitate plans for returning students to ensure their safety and the safety of the campus community.
    - Targeted communication was disseminated February 29 and March 1, instructing returning students to self-isolate for 14 days, take their temperature daily, and report any symptoms to Thielen Student Health Center.
    - Students were encouraged to go home, but isolated campus housing also was arranged.

## March 2

- Senior leadership and key university officials reconvened in person to discuss upcoming university-sponsored international travel, including spring break study abroad.
- Scenarios were presented for consideration and discussion, and a March 4 morning meeting was scheduled to finalize a decision.
- A university news conference was scheduled for the afternoon of March 4 to provide a public update.
- Leadership conference calls were established indefinitely, scheduled for 8 a.m. on Tuesdays, Wednesdays, and Thursdays.

## March 4

- University Leadership makes the decision to suspend spring break programs in Africa, Asia, and Europe, based on CDC and State Department guidance in conjunction with University Risk Management travel projections.
- All impacted students were notified via email from the director of the Study Abroad Center and information was shared during the [university news conference](#).
- **The following additional working groups were activated:**
  - ❑ Workforce Protection Working Group
  - ❑ Human Resources Working Group
  - ❑ Large Events/Gatherings Working Group



## March 5

- The Board of Regents directed Iowa State University and the other Regents institutions to suspend all university-sponsored international travel for 30 days, effective immediately.
- A [campus-wide message](#) from President Wintersteen announcing this decision was distributed immediately following release of the Board of Regents statement.
- Targeted communication was circulated to impacted students. Information was also provided through *Inside Iowa State* .
- **The following additional working groups were activated:**
  - ❑ Finance and Logistics Working Group
  - ❑ Community Partners Coordination Group

## March 6

- Senior Vice President and Provost provided additional guidance regarding the international travel suspension (i.e. faculty, staff, and students may not conduct university business, such as delivering a lecture at an institution or conference, or conducting research, while traveling internationally for personal purposes.)
- **The following additional working group was activated:**
  - ❑ Research Working Group

## March 9

- President Wintersteen sent a campus-wide message informing of the first cases of COVID-19 in Iowa, reemphasizing illness prevention techniques, and reiterating the international travel suspension and expectations.
- A message to Parents was distributed regarding Iowa State's emergency response and safety, Spring Break considerations, and university contingency planning.

## March 10

- President Wintersteen will send a campus-wide message today with personal Spring Break travel considerations, and planning for potential impacts on university operations including a new employee FAQ.

### Ongoing monitoring and strategic response

- The university is continuing to actively monitor the COVID-19 outbreak and make decisions on university programs and activities based on ongoing guidance from the CDC, State Department, and the Iowa Department of Public Health in consultation with the Board of Regents.
- Additional working groups will be created to address emerging issues.
- Our top priority is the health and safety of our students, faculty, and staff.

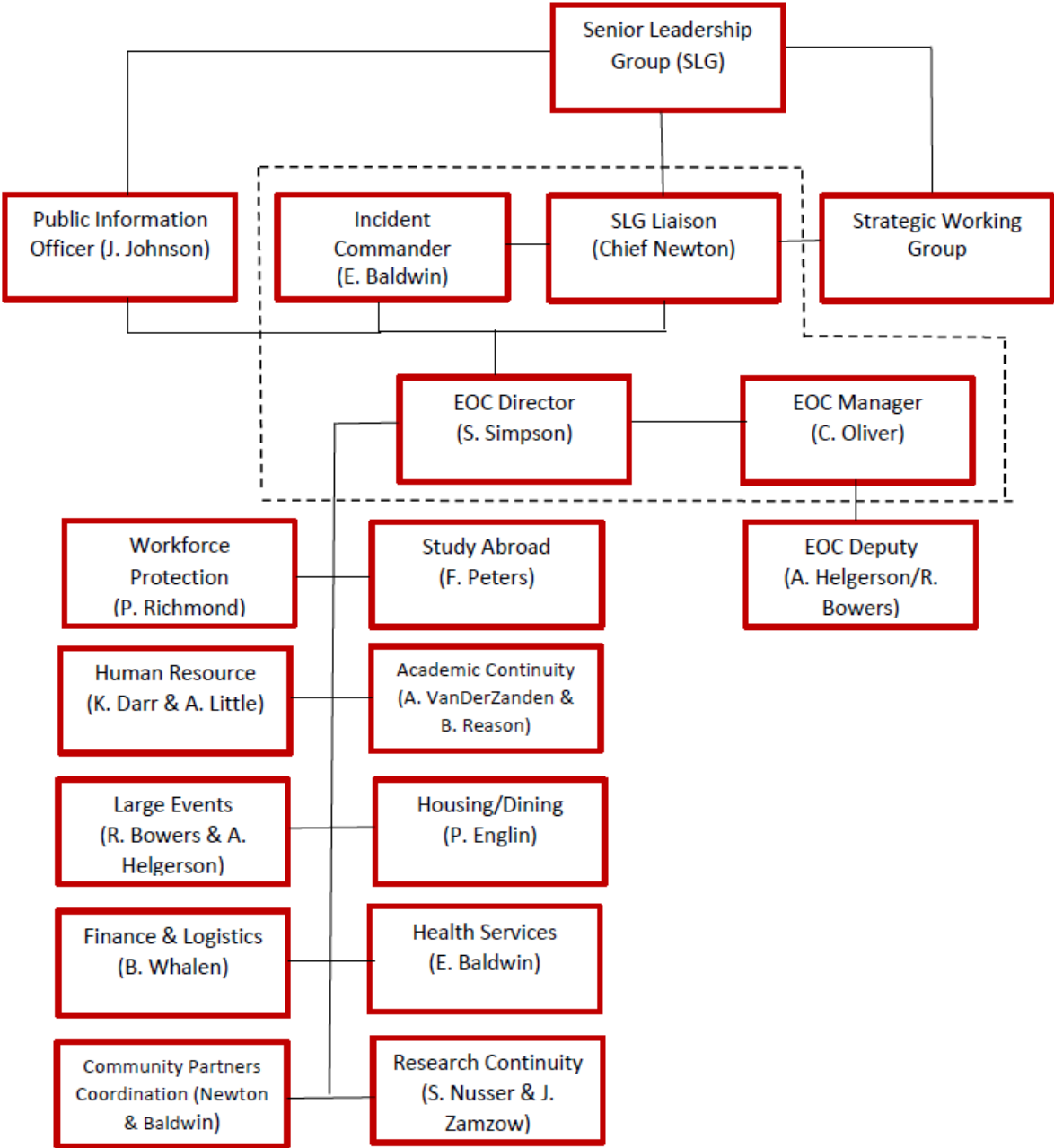
# Study Abroad Program Impacts

- Spring Semester
  - China 3
  - South Korea 6
  - Student teaching (Norway, Poland, Taiwan) 11
  - Italy 135 (47 DesignRome, 88 on 6 programs)
  - Japan 1
- Spring Break
  - 244 students on 16 programs
- Summer
  - Still determining current cancellations

# Study Abroad Program Points

## Priorities

- Student safety
- Academic continuity
- Finances
- Consistent messaging
  - Health issues
  - Reasons for cancellations
  - Finances

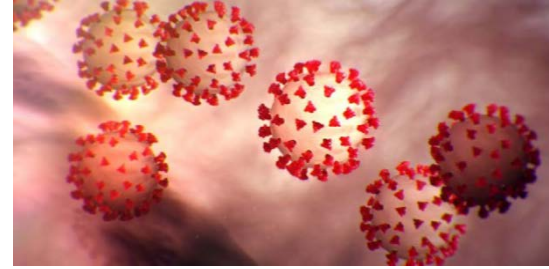


Dotted Line = Incident Management Leadership/Unified Command

# Tracking COVID-19

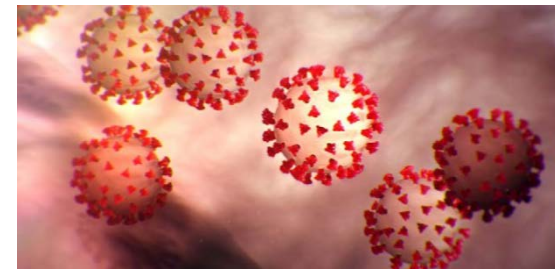
- Centers for Disease Control and Prevention
  - <https://www.cdc.gov/coronavirus/2019-ncov/cases-in-us.html>
- Iowa Department of Public Health
  - <https://idph.iowa.gov/Emerging-Health-Issues/Novel-Coronavirus>
- Johns Hopkins University Mapping
  - <https://coronavirus.jhu.edu/>
- Travel Notices
  - CDC: <https://www.cdc.gov/coronavirus/2019-ncov/travelers/index.html>
  - US Department of State: <https://travel.state.gov/content/travel/en/traveladvisories/traveladvisories.html/>

# Background on COVID-19



- Large family of viruses
- Some infect animals, some infect people, and a few infect both
- Seven are known to infect humans:
  - 4 are common (229E, NL63, OC43 and HKU1)
    - Usually self-limiting mild to moderate upper respiratory illness (like the common cold)
    - Most people infected with at least one in their lifetime
    - Detected on some standard respiratory illness panels
  - 3 are rare (MERS-CoV, SARS-CoV, & 2019-nCoV)
    - Can be more severe-pneumonia & life-threatening illness
    - Will not be identified on standard respiratory illness panels

# Background on COVID-19



- First identified in Wuhan, Hubei Province, China
  - Many of the initial patients in the outbreak had a link to a large seafood and live animal market in Wuhan, China, suggesting animal-to-person spread
- Now person-to-person spread in communities
- People are likely most contagious when they are most symptomatic (the sickest).
- The virus is thought to spread mainly from person-to-person.
  - Between people who are in close contact with one another (within about 6 feet).
  - Through respiratory droplets produced when an infected person coughs or sneezes.



# About COVID-19

- Reported illnesses have ranged from mild symptoms to severe illness and death for confirmed COVID-19 cases.
- Symptoms:
  - Fever
  - Cough
  - Shortness of breath
- Prevent the spread of illness
  - If sick, stay home except to get medical care
  - Separate yourself from other people and animals in your home
  - **Call ahead** before visiting your doctor
  - Follow good infection control practices

# The Best Prevention: Infection Control

- Cover your nose and mouth with tissues when you cough or sneeze and throw the tissue in the trash after use.
- Wash hands often with soap and water, especially after coughing or sneezing. Alcohol-based hand sanitizers are also effective.
- Avoid touching your eyes, nose and mouth to avoid spreading germs.
- Improve your immune system by getting enough rest (eight hours is ideal), exercising regularly, and eating healthy.
- Stay home if you are sick and avoid close contact with sick people.
- Instead of a handshake, use an elbow bump to avoid spreading germs.





# Social Distancing

Goal: Maintain a distance of 6 feet away from others

Examples may include:

- Potentially cancelling K12 schools and college classes
- Advising cancellation of events and large meetings
- Recommending cancelling or limiting non-essential travel
- Encouraging people to work from home if possible
- Avoid gathering together in lunchrooms and other areas
- For business that provides services, for example restaurants-consider expanding carryout services and if you seat people, have them spaced out.
- Customer service -frequent use of hand sanitizer, not recommending mask use, maintaining distance when possible

# Stay Current with CREDIBLE Information

**Iowa State University:**

<https://web.iastate.edu/safety/updates/covid19>

**Centers for Disease Control and Prevention (CDC):**

<https://www.cdc.gov/coronavirus/2019-nCoV/index.html>

**Iowa Department of Public Health:**

<https://idph.iowa.gov/Emerging-Health-Issues/Novel-Coronavirus>

# How can you help?

- Provide reassurance and education to your team about ISU's management of COVID-19
- Plan for continuity of operations
- Stop the spread of rumors and misinformation
- Speak out against [negative and stigmatizing behavior](#)
- Share communication tools

# STOP GERMS! WASH YOUR HANDS

## Germs are Everywhere

In the air and on surfaces we touch. They enter our bodies through the air or from our hands.

### Keep Clean!

- Phones
- Keyboards
- Mouses
- Countertops
- Door Handles
- Light Switches

### Slow the spread of germs

- Stay home when sick
- Cover coughs and sneezes
- Wash your hands

## Wash Hands



### Why?

- Stay healthy
- Prevent spread of illnesses

### When?

- Before eating
- After restroom
- After coughing, sneezing or being around someone ill

### How?

- Wash with soap and water for 20 seconds
- Use an alcohol hand sanitizer and rub hands until dry

IOWA STATE UNIVERSITY  
Environmental Health and Safety

Thielen Student Health Center: (515) 294-5801  
Environmental Health and Safety: (515) 294-5359

# DON'T LET THE FLU GET YOU

## GET VACCINATED

A yearly flu vaccine is the first and most important step in protecting yourself and others from the flu.



## STOP GERMS

Cover your coughs and sneezes with a tissue or your sleeve and wash your hands frequently.

## PROTECT OTHERS

If you have the flu, **STAY HOME** and limit contact with others.



IOWA STATE UNIVERSITY  
Environmental Health and Safety

Thielen Student Health Center: (515) 294-5801  
Environmental Health and Safety: (515) 294-5359

Unit Name		
<b>Leadership Succession</b> Starting with unit chair or supervisor, list 3 to 5 personnel with authority to set policy and allocate unit resources (e.g., personnel, facilities, equipment, supplies)	<b>Employee Name</b>	<b>Phone</b>
		<b>Work Hours</b>
<b>Critical Functions</b> Briefly describe the functions your unit must perform to continue the university's land grant missions of education, extension, and research during a potential extended period of limited resources and high absenteeism.		
<b>Staffing Requirements</b> Define the minimum staffing required to perform your unit's identified critical functions.		
<b>Remote Work Capacity</b> Describe which of your unit's identified critical functions can be performed via remote work (i.e., no physical presence on campus due to self-isolation or social distancing requirements).		
<b>Special Concerns</b> Describe any other factors which will be of unusual or unique concern to your unit during a potential extended period of limited resources and high absenteeism.		

# Questions